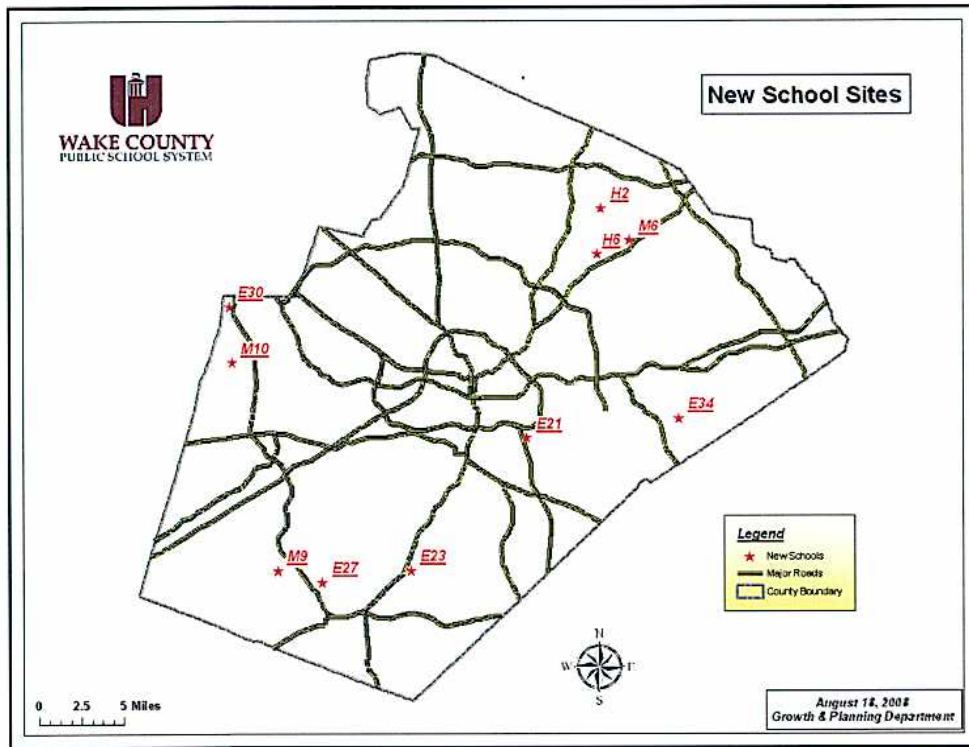


# Developing A Multi-Year Assignment Plan For Students In Wake County

Chuck Dulaney  
Assistant Superintendent For Growth and Planning

## Growth Management Objectives For 2008-09

- Develop assignment recommendations for ten new schools opening in 2009, 2010, and 2011
- Implement Board Policy 6200
  - Reduce the number of schools where more than 40% of students are from low-income families
  - Make neighboring schools demographically more comparable to each other
  - Improve alignment of student assignment with the objectives of the Magnet School Program
  - Move schools toward optimal utilization of the long-range building capacity

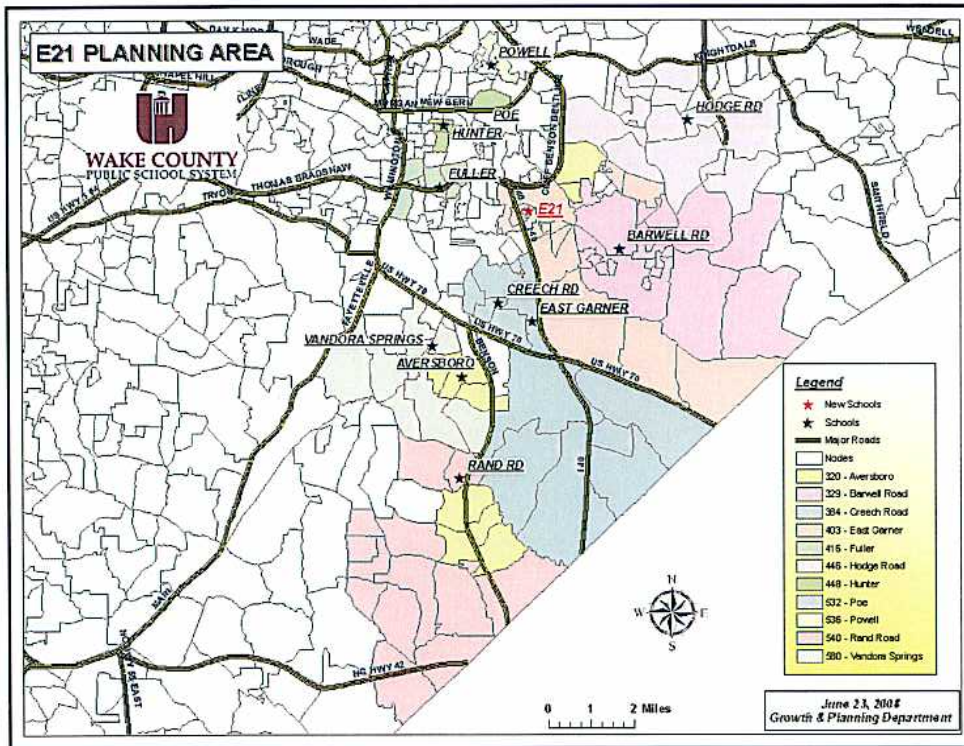


## The Process Summer and Fall 2008

- Meet with impact area planning groups composed of school administrators, teachers, and parents
- Compile trend data and project growth
- Developed draft scenarios
- Review and revise scenarios with planning groups
- Publish a draft proposal on the WCPSS website
- Conduct regional Community Engagement meetings to present the draft proposal
- Review comments from the public
- Finalize a set of recommendations to the BOE

## 2008 Baseline Data For E21 Area (Opening 2010)

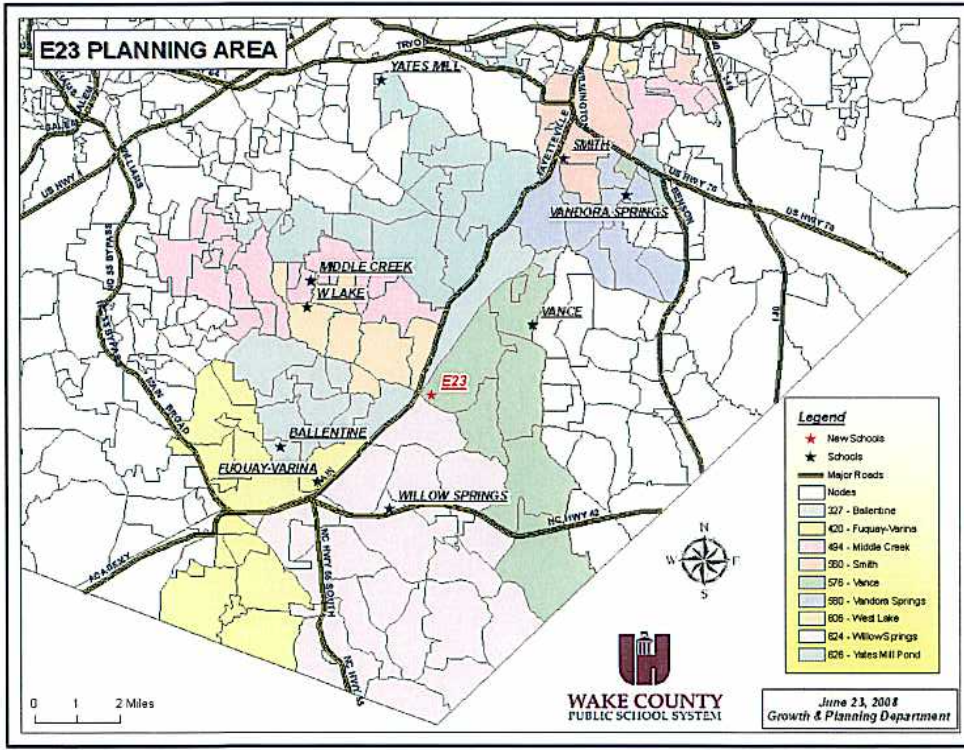
Lev	School Name	Code	Group	Cal C609	Mag	Perm Tchng Space	08-09 Mob	08-09 ACC	Proj 5-30	Seat +/-	UTIL	Pct FRL	Pct LEP	Pct IEP
E	Barwell Rd Elementary	328	E21	YR		48	0	1061	917	134	87%	22%	14%	13%
E	Creech Road Elementary	394	E21	T		39	5	664	638	59	91%	26%	15%	10%
E	East Garner Elementary	433	E21	YR		48	0	915	887	228	76%	25%	18%	16%
E	Hodge Road Elementary	448	E21	YR		38	5	712	625	17	98%	24%	31%	11%
All Elementary Schools						3507	625	71688	66304	3384	86%	23%	13%	11%



# 2008 Baseline Data For E23 Area

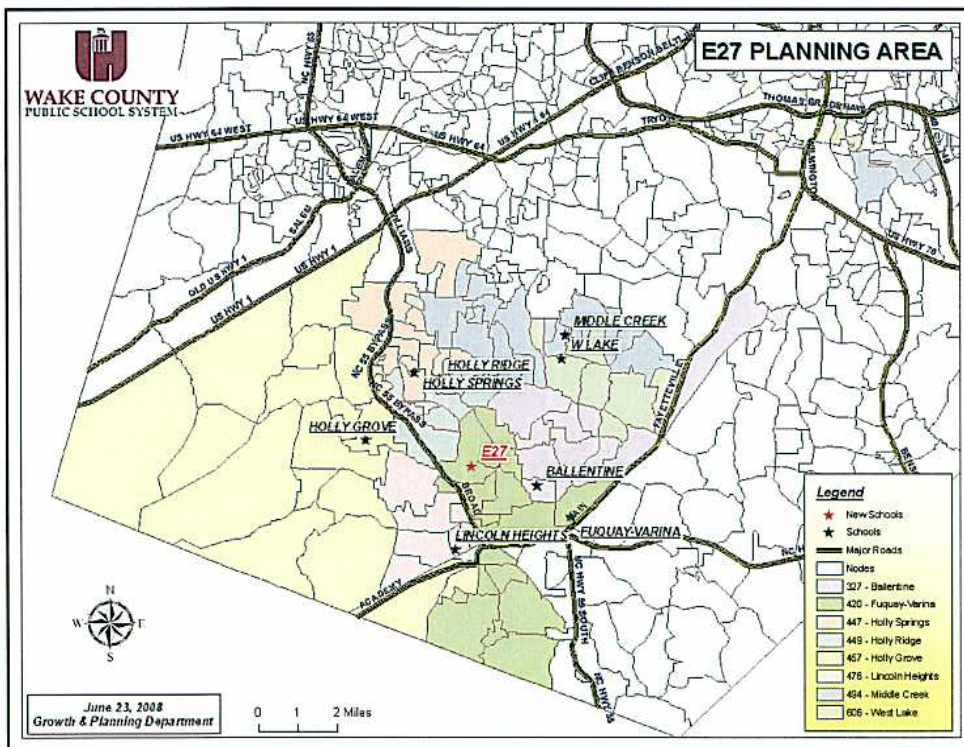
(Banks Road Elem Opening ~~2010~~ <sup>2009</sup>)

LEV	School Name	Code	Group	Cal C630E	Mag	Perm Teaching Space	08-08 Mob	08-08 ACC	Proj 5-30	Seat +/-	UTIL	Pct FRL	Pct LEP	Pct IEP
E	Ballentine Elementary	327	E23	YR		36	5	834	621	13	88%	23%	15%	11%
E	Middle Creek Elementary	494	E23	YR		37	16	1083	1018	77	83%	20%	8%	13%
E	Smith Elementary	580	E23	T		34	0	753	510	240	88%	76%	16%	16%
E	Vance Elementary	576	E23	YR		28	8	635	631	35	94%	26%	10%	10%
E	West Lake Elementary	606	E23	YR		35	14	631	991	-80	106%	26%	17%	10%
E	Willow Springs Elementary	624	E23	YR		32	16	1077	1018	61	94%	30%	9%	11%
All Elementary Schools														
						3607	605	71668	66304	3384	85%	33%	13%	11%



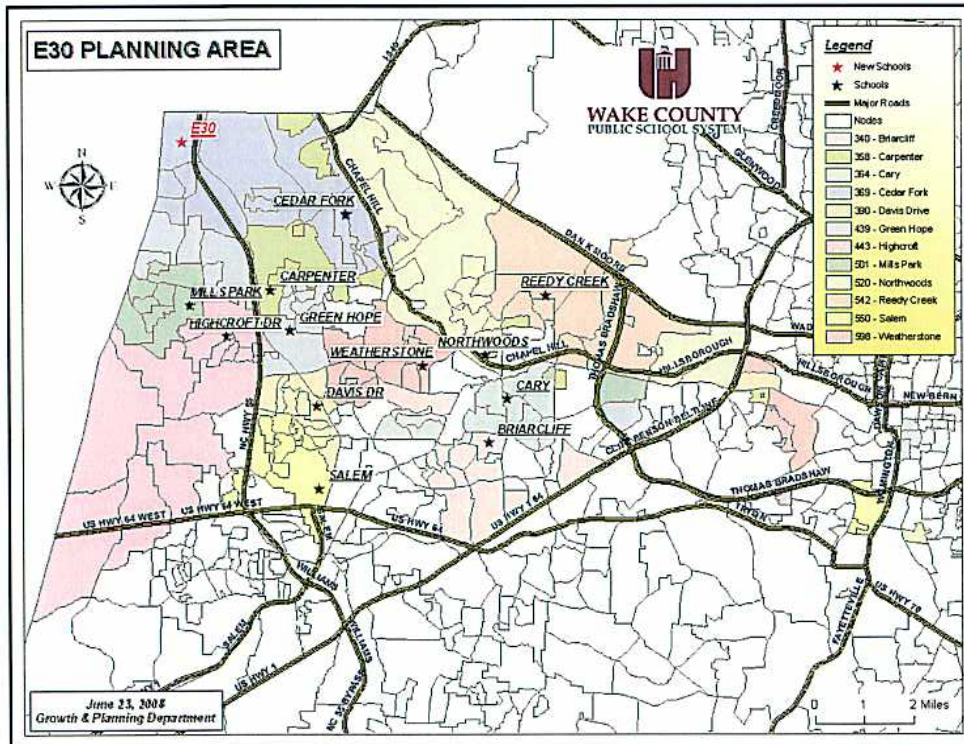
## 2008 Baseline Data For E27 Area (Herbert Akins Rd Elem Opening 2009 or 2010)

Lev	School Name	Code	Group	Cal E27	Orig Mile	Perm Tchng Space	06-09 Mob	08-09 ACC	Proj 5-30	Seat +/-	UTIL	Pct FRL	Pct LEP	Pct IEP
E	Fuquay-Varina Elementary	420	E27	T		35	18	650	953	-3	100%	33%	8%	12%
E	Holly Grove Elementary	457	E27	YR		46	0	663	920	43	98%	16%	8%	12%
E	Holly Ridge Elementary	449	E27	T		36	8	752	703	49	93%	23%	7%	9%
E	Holly Springs Elementary	447	E27	YR		36	16	1136	927	211	81%	15%	4%	13%
E	Lincoln Heights Elementary	478	E27	T	M	37	15	664	657	7	99%	31%	8%	15%
<b>All Elementary Schools</b>														
						3507	626	71668	66304	3384	95%	33%	13%	11%



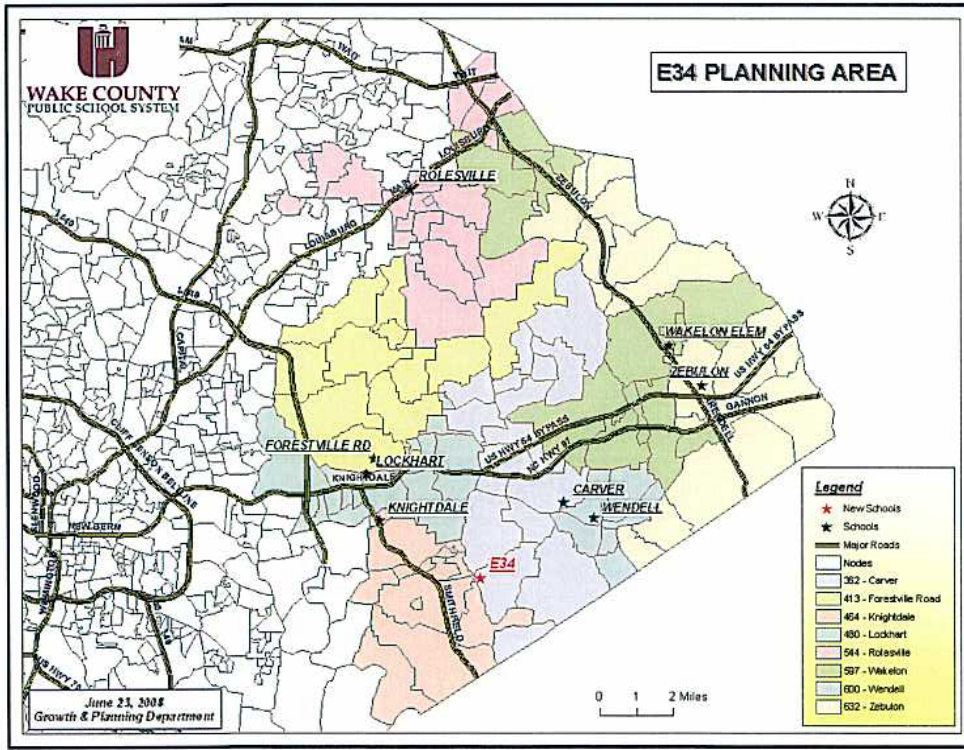
## 2008 Baseline Data For E30 Area (Alston Ridge Elem Opening 2009 or 2010)

Lev	School Name	Code	Group	Cal C&D	Mag	Perm Tchng Space	08-09 Mob	08-09 ACC	Proj 5-30	Seat +/-	UTIL	Pct FRL	Pct LEP	Pct IEP
E	Carpenter Village Elementary	358	E30	YR		37	0	693	696	13	98%	19%	21%	6%
E	Cedar Fork Elementary	358	E30	T		36	8	715	825	-110	115%	12%	25%	7%
E	Green Hope Elementary	439	E30	YR		38	9	1087	895	172	94%	11%	12%	7%
E	Highcroft Elementary	443	E30	YR		38	9	1028	738	260	72%	10%	6%	10%
E	Mills Park	531	E30	YR		51	0	862	709	153	82%	10%	13%	7%
<b>All Elementary Schools</b>														
						3607	606	71668	65304	3364	95%	23%	13%	11%



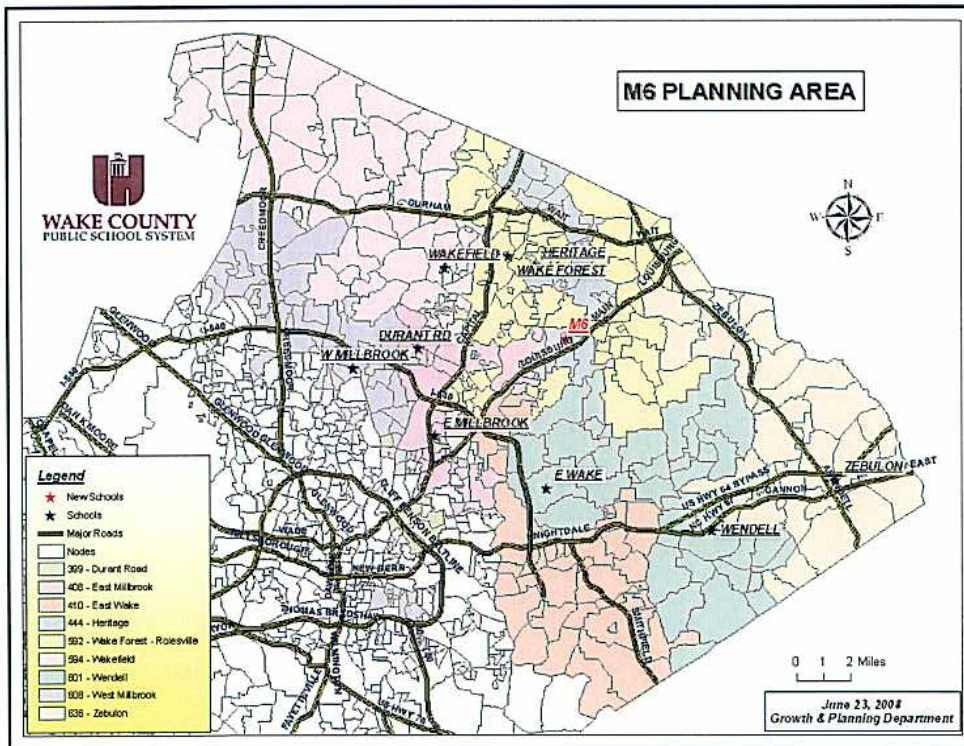
## 2008 Baseline Data For E34 Area (Lake Myra Elem Opening 2009)

Lev	School Name	Code	Group	Cal C&G	Mag	Perm Teaching Space	08-08 Mob	08-08 ACC	Proj 5-30	Seat +/-	UTIL	Pct FRL	Pct LEP	Pct IEP
E	Carver Elementary	362	E34	M		39	7	621	556	58	81%	63%	28%	16%
E	Forestville Road Elementary	413	E34	T		38	6	568	692	-86	116%	45%	11%	13%
E	Knightdale Elementary	454	E34	YR		33	8	754	682	72	80%	66%	18%	14%
E	Lockhart Elementary	480	E34	YR		37	16	652	774	178	81%	45%	11%	13%
E	Wendell Elementary	600	E34	T		35	2	453	523	-84	114%	60%	12%	15%
<b>All Elementary Schools</b>						<b>3607</b>	<b>606</b>	<b>71668</b>	<b>65304</b>	<b>3384</b>	<b>96%</b>	<b>93%</b>	<b>13%</b>	<b>11%</b>



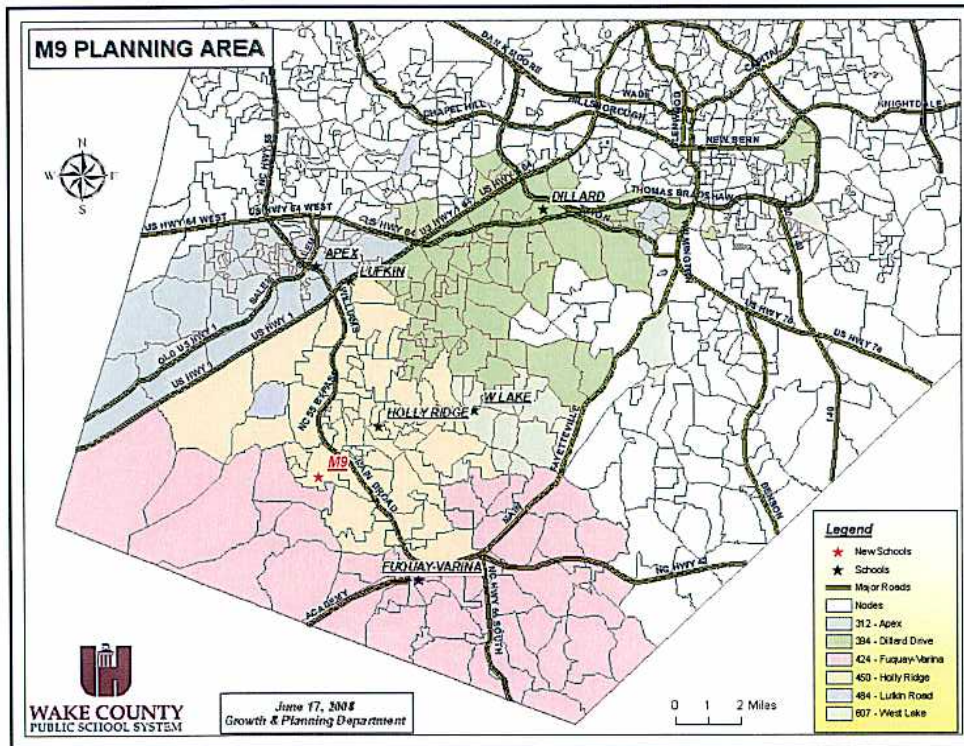
## 2008 Baseline Data For M6 Area (Opening 2010 or 2011)

Lev	School Name	Code	Group	Cal C&D	Mag	Perm Teaching Space	08-09 Mob	08-09 ACC	Proj 5-30	Seat +/-	UTIL	Pct FRL	Pct LEP	Pct IEP
M	Durant Road Middle	399	M8	YR		82	11	1483	1125	336	77%	27%	7%	18%
M	East Millbrook Middle	408	M8	T	M	38	9	1106	1163	-54	105%	49%	9%	13%
M	East Wake Middle	410	M8	YR		54	12	1250	1103	147	98%	53%	13%	20%
M	Heritage Middle	444	M8	YR		80	0	1121	1290	-169	115%	22%	3%	15%
M	Wake Forest-Rolesville Middle	522	M8	T		55	11	1137	1163	-23	102%	32%	8%	14%
M	Wakefield Middle	524	M8	T		57	13	1240	1313	-73	106%	16%	5%	14%
M	Wendell Middle	601	M8	T		32	30	442	466	-23	105%	52%	10%	16%
M	West Millbrook Middle	608	M8	T		59	9	1181	959	222	91%	39%	11%	15%
M	Zebulon Middle	636	M8	T	M	58	8	1015	604	211	78%	52%	8%	20%
<b>All Middle Schools</b>						<b>1843</b>	<b>123</b>	<b>31462</b>	<b>31136</b>	<b>358</b>	<b>98%</b>	<b>31%</b>	<b>8%</b>	<b>15%</b>



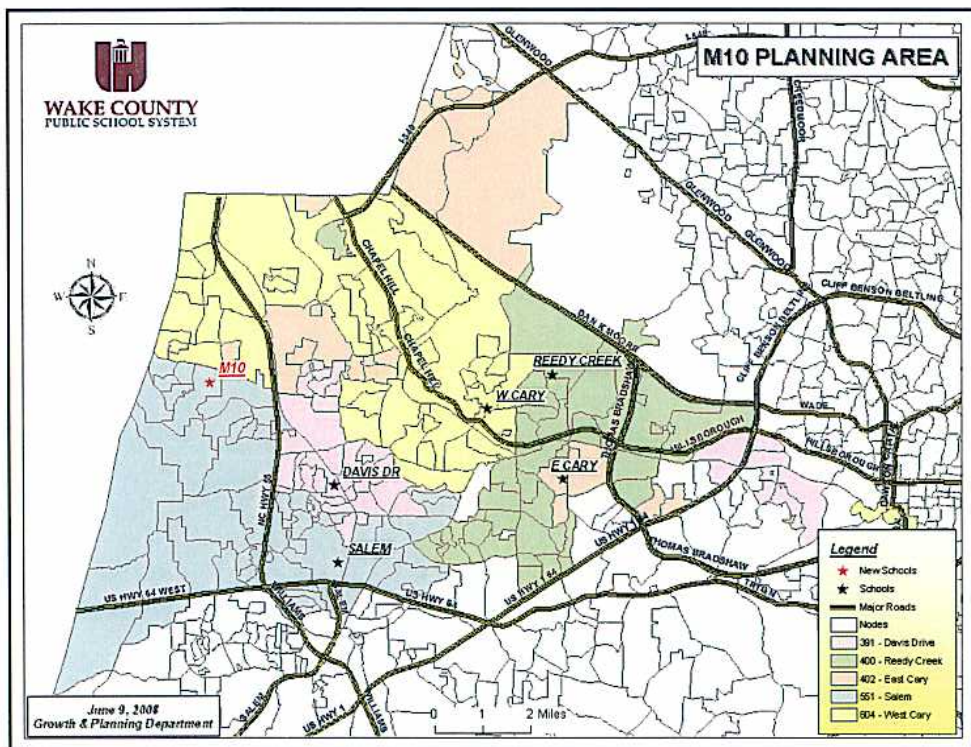
## 2008 Baseline Data For M9 Area (Holly Grove Middle Opening 2009 or 2010)

Lev	School Name	Code	Group	Cal C&S	M9	Perm Tchng Space	08-09 Mob	08-09 ACC	Proj 5-30	Seat +/-	UTIL	Pct FRL	Pct LEP	Pct IEP
M	Apex Middle	312	M9	T		80	0	1023	1011	12	98%	17%	8%	13%
M	Dillard Dr. Middle	334	M9	T		82	8	1126	1168	-50	104%	29%	11%	10%
M	Fuquay-Varina Middle	424	M9	T		57	0	859	978	-119	114%	26%	8%	16%
M	Holly Ridge Middle	450	M9	T		57	14	1214	1311	-97	109%	28%	8%	10%
M	Lufkin Rd. Middle	484	M9	YR		57	0	1112	1109	4	100%	10%	4%	15%
M	West Lake Middle	637	M9	YR		56	12	1324	1427	-103	109%	21%	7%	13%
<b>All Middle Schools</b>						<b>1643</b>	<b>193</b>	<b>31482</b>	<b>31136</b>	<b>356</b>	<b>98%</b>	<b>21%</b>	<b>8%</b>	<b>15%</b>



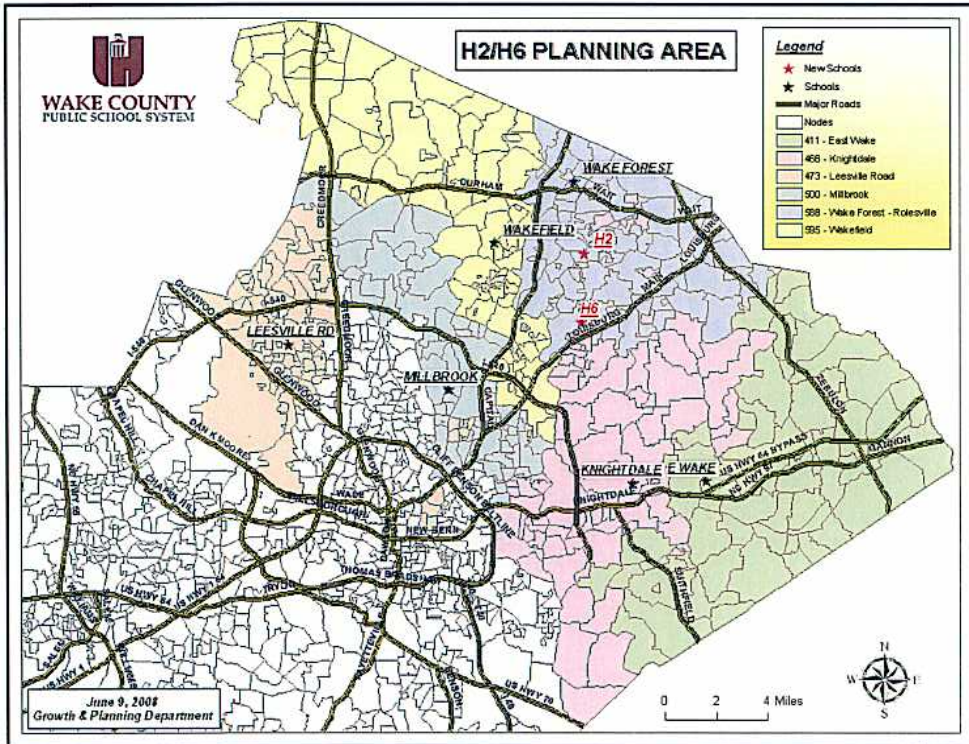
## 2008 Baseline Data For M10 Area (Mills Park Middle Opening 2009 or 2010)

Lev	School Name	Code	Group	Cal C&S	Mag	Perm Tchng Space	08-09 Mob	08-09 ACC	Proj 5-30	Seat +/-	UTIL	Pct FRL	Pct LEP	Pct IEP
M	Davis Drive Middle	391	M10	T		56	10	1140	1215	-75	107%	11%	7%	13%
M	East Cary Middle	402	M10	YR		80	0	1034	444	590	43%	24%	14%	16%
M	Reedy Creek Middle	400	M10	T		57	0	911	799	122	87%	42%	15%	16%
M	Salem Middle	551	M10	YR		57	2	1205	1224	-18	101%	5%	3%	11%
M	West Cary Middle	604	M10	T		56	8	1032	1145	-113	111%	25%	10%	12%
	<b>All Middle Schools</b>					<b>1843</b>	<b>103</b>	<b>31492</b>	<b>31136</b>	<b>356</b>	<b>98%</b>	<b>31%</b>	<b>8%</b>	<b>15%</b>



## 2008 Baseline Data For H2 and H6 Areas (Heritage High Opening 2010 and H6 Opening ?)

Site	School Name	Code	Group	Cal C630	Med	Perm Tchng Space	05-09 Mob	08-09 ACC	Proj 5-30	Seat +/-	UTIL	Pct FRL	Pct LEP	Pct IEP
S	East Wake High Campus	411	H2H6	T		82	7	1709	1813	158	91%	44%	6%	21%
S	Knightdale High	488	H2H6	T		83	16	1957	1913	47	98%	37%	8%	15%
S	Leesville Road High	473	H2H6	T		104	12	2351	2548	-195	109%	16%	5%	9%
S	Millbrook High	500	H2H6	T		104	18	2421	2473	-49	102%	33%	10%	15%
S	Wake Forest-Rolesville High	598	H2H6	T		81	40	2407	1982	525	78%	17%	2%	12%
S	Wakefield High	595	H2H6	T		107	31	2509	2942	-33	101%	20%	7%	12%
<b>All High Schools</b>						<b>1865</b>	<b>330</b>	<b>41187</b>	<b>39483</b>	<b>1584</b>	<b>96%</b>	<b>24%</b>	<b>6%</b>	<b>14%</b>



## The Process Summer and Fall 2008

- Meet with impact area planning groups composed of school administrators, teachers, and parents
- Meet with the Student Assignment Advisory Committee
- Compile trend data and project growth
- Develop draft scenarios
- Review and revise scenarios with planning groups
- Publish a draft proposal on the WCPSS website
- Conduct regional community engagement meetings to present the draft proposal and receive feedback
- Review comments from the public
- Finalize a set of recommendations to the BOE

## Multi-Year Plan Timeline

June-July	First Planning Group Meetings
August	Second Planning Group Meetings
September	Third Planning Group Meetings
October	Staff Draft Recommendations Compiled
November	Draft Shared At Community Engagement Meetings
December	Final Staff Recommendations Presented To The BOE
January	BOE Public Hearings