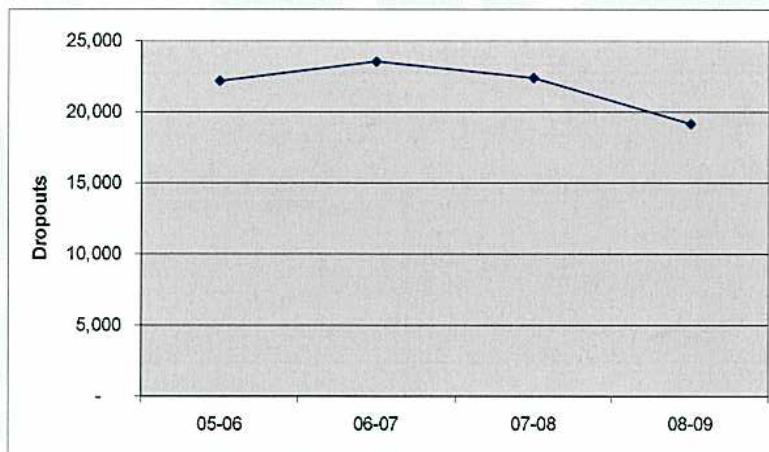




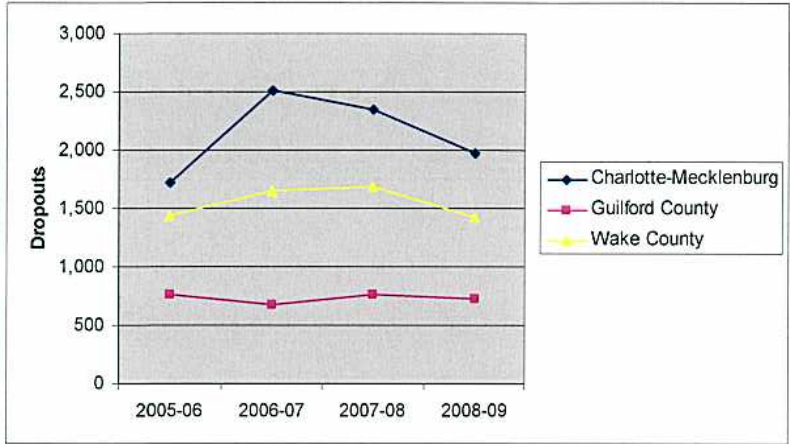
Wake County 2008-09 Data On Dropouts Short-Term Suspensions Long-Term Suspensions Alternative Learning Program Placements

Dr. Ken Gattis
NC Department of Public Instruction

State Dropout Counts, 2005-06 to 2008-09 Grades 9-12

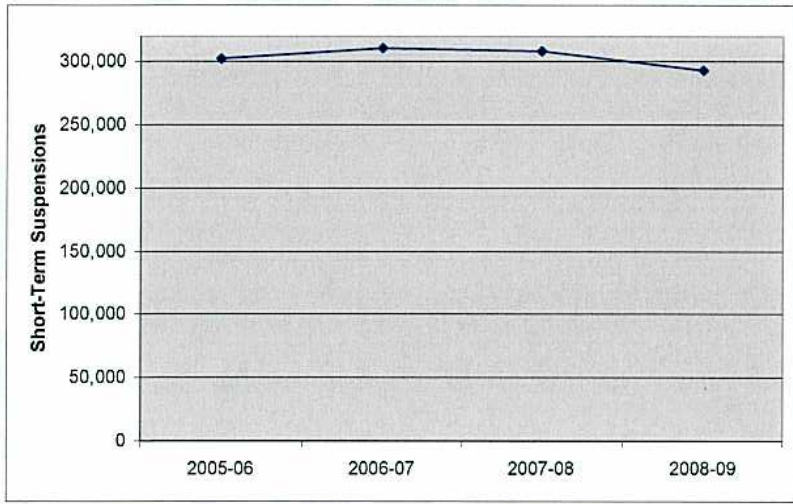


Wake County Schools and Comparison LEAs Grade 9-12 Dropouts



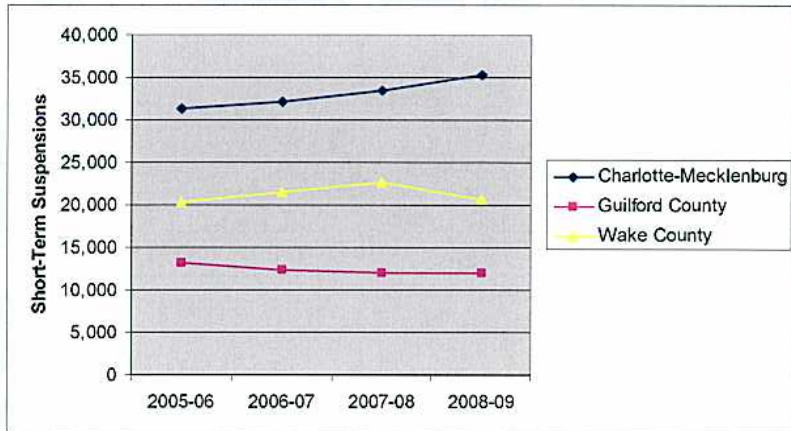
Public Schools of North Carolina

State Short-Term Suspensions Grades K-12



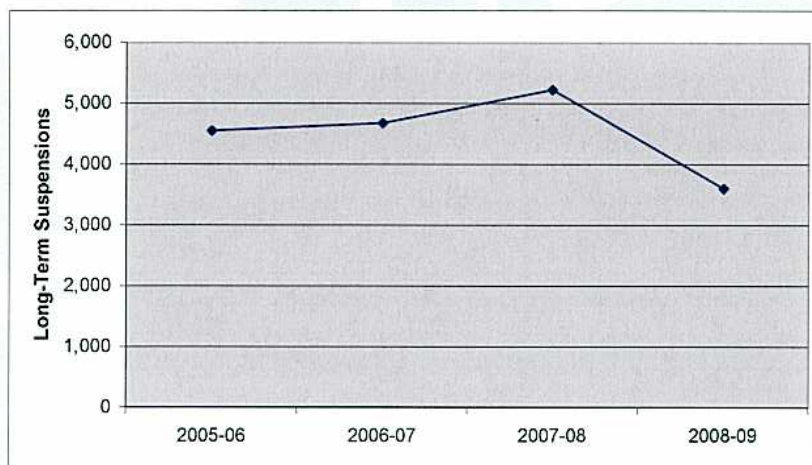
Public Schools of North Carolina

Wake County Schools and Comparison LEAs Grade K-12 Short-Term Suspensions



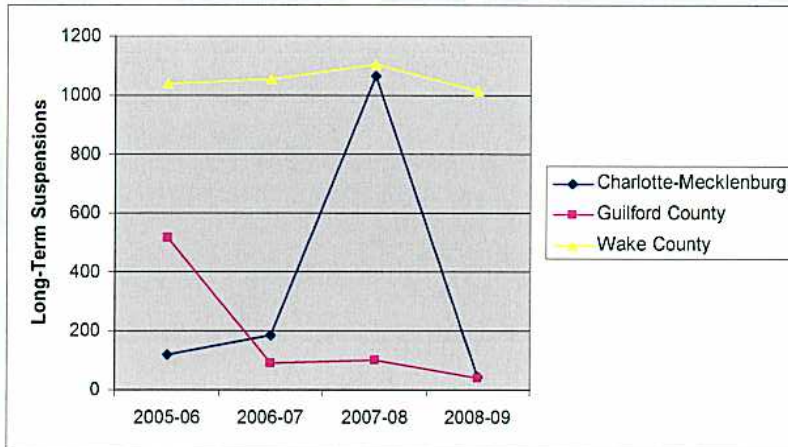
Public Schools of North Carolina

State Long-Term Suspensions Grades K-12



Public Schools of North Carolina

Wake County Schools and Comparison LEAs Grade K-12 Long-Term Suspensions



Public Schools of North Carolina

Wake County Schools, 2008-09 Counts, Rates & Ranks in State

	Count	Rate	Rate Rank
Grade 9-12 Dropouts	1430	3.88	21
Grade 9-12 STS	10,410	27.3	53
Grade 9-12 LTS	688	1.802	111
Grade 1-12 STS	20,651	15.1	48
Grade 1-12 LTS	1,015	0.74	111

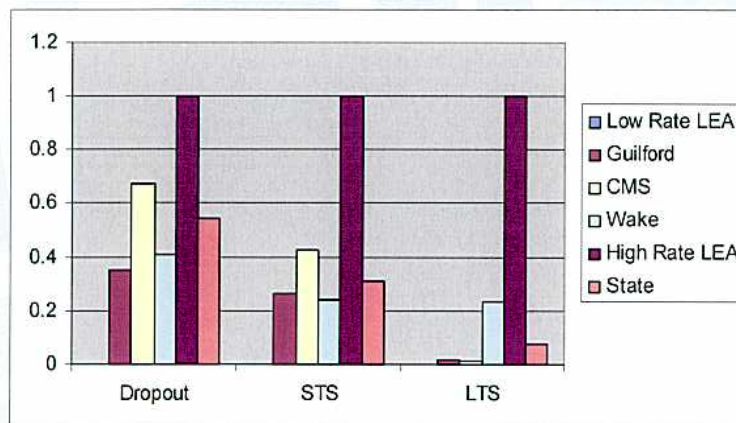


Public Schools of North Carolina

2008-09 Grade 9-12 Dropout, Short-Term Suspension, and Long-Term Suspension Rates (All rates are per 100 students.)

	Dropout Rate	STS Rate	LTS Rate
High Rate LEA	6.9	111.2	7.688
State Average	4.27	34.8	0.592
CMS	4.99	47.8	0.082
Guilford	3.13	29.7	0.156
Wake	3.47	27.3	1.802
Low Rate LEA	1.1	0.4	0

Relative Results, 2008-09



Suspensions in Wake County School System, 2008-09

- 20,651 short-term suspensions were given to 10,918 students.
- 57,650 school days lost, about 3 days per STS.
- 1,015 long-term suspensions were given to 1,014 students.
- 87,227 days lost, about 86 days per LTS.



Reasons for Short-Term Suspensions

Offense	Wake	State
Disrespect of staff	24.4	7.1
Fighting	21.8	13.8
Inappropriate language	12.1	9.8
Disruptive behavior	11.5	17.3
Aggressive behavior	6.1	7.8
Theft	3.7	2.2
Cell phone use	2.5	1.5
Gang activity	2.4	0.6
Communicating threats	2.3	1.4
Insubordination	0.0	12.3
Other	1.3	5.6
Cutting Class	0.0	3.0
Excessive Tardiness	0.0	2.7
Minor Assault	0.5	2.2



Reasons for Long-Term Suspensions

Offense	Wake	State
Possession of an illegal substance	18.9	17.6
Minor Assault	18.8	9.2
Possession of a weapon	10.3	8.6
Gang activity	9.2	4.9
Fighting	6.3	8.9
Other	5.9	8.8
Assault on school personnel	5.5	2.9
Aggressive behavior	3.5	4.0
Disrespect of staff	3.4	3.5
Disruptive behavior	3.1	9.1
Inappropriate language	2.9	5.2
Assault with a weapon	2.6	0.9
Possession of alcohol	2.5	1.7
Communicating threats	2.1	4.1
Theft	2.1	1.8
Insubordination	0.0	5.4
Disorderly conduct	0.0	2.4



Short-Term Suspensions in Wake County Schools, 2008-09

- Elementary schools reporting zero STS were Brassfield, Davis Drive, Penny Road, and Fuller.
- 23 schools reported 1-10 STS.
- 37 schools reported 11-30 STS.
- 43 schools reported 31-100 STS.
- 49 schools reported 100 or more STS.
- Highest count (1403) reported by Knightdale HS.



Highest Short-Term Suspension Rates

Sch #	School	STS	ADM	(acts/100)
324	Longview	345	98	352.0
438	River Oaks MS	79	27	292.6
701	East Wake Sch of Integ	337	334	100.9
703	East Wake Sch of Engr	339	354	95.8
466	Knightdale HS	1403	1752	80.1
702	East Wake Sch of Arts..	285	409	69.7
506	Moore Sq. Museum MS	238	473	50.3
318	Athens Drive HS	768	1750	43.9
394	Dillard Drive MS	488	1155	42.3
700	East Wake Sch of H Sci	163	392	41.6
408	East Millbrook MS	467	1128	41.4
404	East Garner MS	449	1111	40.4
436	Garner HS	854	2238	38.2
601	Wendell MS	154	419	36.8
528	Phillips High	48	131	36.6



Long-Term Suspensions in Wake County Schools, 2008-09

- 99 schools reported no long-term suspensions.
- 12 schools reported 1-4 LTS.
- 14 schools reported 5-10 LTS.
- 13 schools reported 11-20 LTS.
- 18 schools reported 20 or more LTS.
- Highest count (84) reported by Enloe High, followed by Garner High (81).



Highest Long-Term Suspension Rates

Sch #	School	LTS	ADM	(acts/100)
438	River Oaks MS	2	27	7.407
528	Phillips High	8	131	6.107
701	East Wake Sch of Integ	16	334	4.790
702	East Wake Sch of Arts..	19	409	4.645
703	East Wake Sch of Engr	15	354	4.237
324	Longview	4	98	4.082
436	Garner HS	81	2238	3.619
412	Enloe HS	84	2580	3.256
552	Sanderson HS	53	1881	2.818
466	Knightdale HS	49	1752	2.797
495	Middle Creek HS	45	1635	2.752
508	Mount Vernon	3	117	2.564



Public Schools of North Carolina

Dropouts and Dropout Rates Large High Schools

School	Dropouts	Rate
GARNER HIGH	162	6.54%
SANDERSON HIGH	118	5.66%
MILLBROOK HIGH	113	4.45%
ATHENS DRIVE HIGH	84	4.40%
MIDDLE CREEK HIGH	69	3.85%
NEEDHAM BROUGHTON	90	3.83%
CARY HIGH	72	3.67%
FUQUAY-VARINA HIGH	66	3.39%
SOUTHEAST RALEIGH	56	3.38%
WAKE FOR.-ROLESVILLE	59	3.00%
WAKEFIELD HIGH	80	2.81%
LEESVILLE ROAD HIGH	72	2.80%
WILLIAM G ENLOE HIGH	68	2.50%
HOLLY SPRINGS HIGH	43	2.41%
PANTHER CREEK HIGH	34	1.51%
APEX HIGH	23	1.02%
KNIGHTDALE HIGH	19	1.00%
GREEN HOPE HIGH	15	0.75%



Public Schools of North Carolina

Dropouts and Dropout Rates Small High Schools

School	Dropouts	Rate
PHILLIPS HIGH	50	24.81%
LONGVIEW	14	11.81%
EAST WAKE INTEG TECH	33	8.32%
EAST WAKE ARTS, ED &	34	7.60%
EAST WAKE ENGINEERIN	27	6.62%
EAST WAKE HEALTH SCI	26	6.24%
WAKE EARLY COLL HEAL	3	1.41%



Public Schools of North Carolina

Reported Reasons for Dropping Out

Reported Dropout Reason	Wake	State
Attendance	37.2%	42.0%
Unknown	27.7%	8.3%
Enrollment in a community college	15.4%	21.1%
Failure to return after a LTS	8.3%	3.1%
Moved, school status unknown	5.5%	4.4%
Incarcerated in an adult facility	1.5%	1.7%
Choice of work over school	1.4%	2.7%
Health problems	0.6%	0.9%
Pregnancy	0.5%	1.0%
Academic problems	0.4%	6.1%
Discipline problem	0.4%	2.1%
Employment necessary	0.4%	0.5%
Runaway	0.4%	0.7%



Public Schools of North Carolina

Alternative Learning Programs

- Programs and schools that are designed to meet the needs of students placed at risk for various factors
- Have a small student/teacher ratio; recommend 10:1, but no higher than 15:1
- Provide the primary instruction and assign grades for students assigned there
- Makes the standard course of study available for all students assigned there
- Assignments are long-term, a minimum of one grading period.



Wake ALP Enrollments

Sch #	School	2008-09		2009-10	
		Students	Enrollments	Students	Enrollments
438	River Oaks Middle School	39	41	83	83
508	Mount Vernon	169	170	156	158
528	Phillips High	192	216	212	217
999	Richard Milburn School	245	250	0	0
	TOTALS	645	677	451	458



For More Information

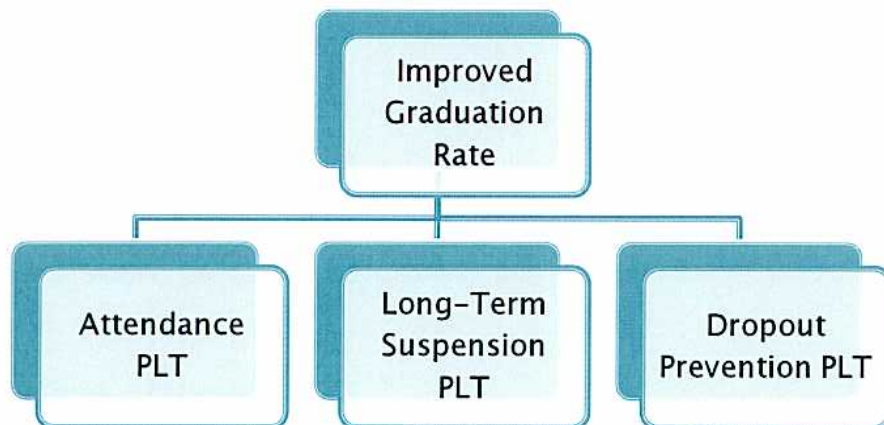
- Dr. Ken Gattis, Coordinator, Support Services Section, Division of Program Monitoring and Support Services, NC Department of Public Instruction
- kgattis@dpi.state.nc.us
- 807-3940



WCPSS Dropout Prevention

WCPSS Student Achievement Committee
May 11, 2010

Components of Dropout Prevention

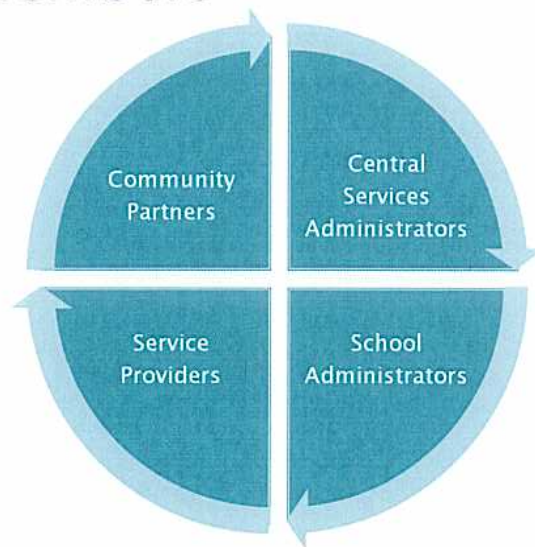


Improved Graduation Rate

Areas of Focus

1. Review and assess alternative schools and implementation SCORE
2. Implement Pyramid of Interventions systemically
3. Implement PEPs systemically
4. Implement Intervention Alignment/Universal Screening/Redefined SST
5. Create early warning system that combines attendance, academic and behavioral data

PLT Members



Work of PLTs

- ▶ Identify key stakeholders
- ▶ Develop norms
- ▶ Identify and understand appropriate data
- ▶ Develop SMART Goals
- ▶ Develop Action Steps

Improving WCPSS Graduation Rate Initiatives PLT SMART Goals and Action Steps

PLT	Smart Goals	Action Steps
Attendance	<ol style="list-style-type: none"> 1. By August 2011, 100% of schools will be using a standard process for tracking attendance 100% of the time. 2. By June 2011, improve the Average Daily Attendance Rate-ADA in Fourth and Sixth Grade to 97%. 	<ol style="list-style-type: none"> 1. Develop a consistent method of tracking attendance that will generate valid, reliable data 2. Develop a plan to build the awareness of parents and school staff on the importance of attendance and the policy and procedures associated with attendance
Suspension	<p>by 2012-2013, WCPSS will</p> <ol style="list-style-type: none"> 1. decrease suspensions by creating policy application parameters for those Board policies that do not contain mandated consequences. 2. provide an increased array of appropriate services that will decrease the percentage of students who receive long-term suspensions multiple short-term suspensions when compared with the previous year. 	<ol style="list-style-type: none"> 1. Analyze data related to SMART goal areas 2. Develop solutions related to SMART goal areas 3. Develop action steps (for Array of Services, Best Practices and Policy) 4. Establish priorities and timelines for SMART goal areas 5. Respond to DPI complaints related to Long Term Suspensions for students with disabilities
Dropout Prevention	<p>The WCPSS Dropout Prevention PLT will lead the implementation of research based strategies in order to reduce the dropout rate to less than 3% as evidenced by the 2011-12 WCPSS dropout rate.</p>	<ol style="list-style-type: none"> 1. Identify dropout prevention strategies in WCPSS and Wake County 2. Develop research-based effective practices to prevent retention, particularly at 9th grade 3. Recommend components for an early warning system for potential dropouts to be used K-12



National Dropout Prevention Center/Network

- ▶ 15 Effective Strategies
- ▶ WCPSS and Wake County strategies identified

WCPSS and Wake County Mitigates for Dropout Prevention
 Based on National Dropout Prevention Center/Network 15 Strategies for Dropout Prevention

Strategies	1. Family Involvement	2. School Climate	3. Safe Schools	4. Peer Support	5. Self-Motivation	6. Career and Technical Education	7. Career Counseling	8. Career Assessment	9. Career Planning	10. Career Preparation	11. Career Information	12. Career Readiness	13. Career Development	14. Career Training	15. Career Support
1. Family Involvement															
2. School Climate															
3. Safe Schools															
4. Peer Support															
5. Self-Motivation															
6. Career and Technical Education															
7. Career Counseling															
8. Career Assessment															
9. Career Planning															
10. Career Preparation															
11. Career Information															
12. Career Readiness															
13. Career Development															
14. Career Training															
15. Career Support															

Graduating on Time ...

